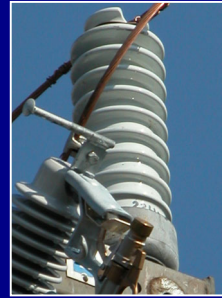


SERVICES FOR UTILITIES & LOCAL GOVERNMENT



SERVICES & CAPABILITIES

- ❑ Subtransmission/Distribution Network Planning.
- ❑ Steady State Network Load Flow & Fault Modeling on DINIS, PSS Adept or PSSEngine.
- ❑ Network Reliability Analysis & Solutions Development.
- ❑ Quality of Supply Investigations & Solutions Development Including Determination of Voltage Flicker & Harmonic Distortion Limits to Australian Standards.
- ❑ Project Management of Major or Technically Critical Network Augmentation Projects Such As New 22kV Feeders, 66/22kV Zone Substations, Connection of High Voltage Customers, Fluctuating Industrial/Commercial Loads, Embedded Generators, etc.
- ❑ Preparation of Electrical Utility Infrastructure Tender Specifications, Tender Management & Assessment.
- ❑ Development of Non-Standard Technical & Commercial Contracts.
- ❑ Preparation of Submissions to The Powerlines Relocation Committee for the Undergrounding or Relocation of Powerlines in Areas of Significant Cultural, Aesthetic or Environmental Value.
- ❑ Project Management of Electrical Utility Related Projects, Inclusive of Design, Survey, Drafting, Utility Approvals & Project Tendering¹.
- ❑ Electrical Infrastructure Planning & Consultation Services for Regional Economic Development Initiatives, Major Industries & Local Government Town Planning Purposes.
- ❑ Turn-key Project Management of Roadway Lighting & Building or Parkland Feature Lighting.
- ❑ Independent Advice on Utility or Private Developer Project Proposals for New Powerlines or Electrical Infrastructure.

1. RIPEN Utility Services tenders some design activities, drafting, survey and construction services. RIPEN Utility Services invites contractors with appropriate utility accreditations and proven project & OH&S performance to bid for these services. RIPEN Utility Services is not affiliated with any other design or construction service companies hence, RIPEN Utility Services can derive the best market price for these services.

CURRENT/RECENT PROJECTS

- ❑ Project management of SP AusNet's \$10.2M Stage 1 redevelopment of the Leongatha 66/22kV zone substation.
- ❑ Undertake reliability reviews and prepare improvement recommendations for approximately 60 of SP AusNet's worst performing 22kV feeders.
- ❑ Assessment of motor starting solutions for proposed new crushing and processing equipment at Castella Quarries. The assessment undertaken involved the predictive modelling of motor starting effects on the 22kV network in accordance with relevant Australian Standards.
- ❑ Completion of a significant load management study within the Melbourne Northern Growth Corridor, in areas residing in SP AusNet's distribution business. The study determined a range of load management initiatives/measures to assist SP AusNet in the management of network loading, during a period of extensive network augmentation and development and high customer load growth.
- ❑ Design, Specification & Tendering of Pedestrian & Parkland Feature Lighting for Baw Baw Shire Council XVIII Commonwealth Games Heritage Park.
- ❑ Preparation of Contestable Construction Tender Documentation for Cardinia Shire Council, for the Undergrounding of Powerlines in John St Pakenham.
- ❑ Provision of Network Planning/Modeling Services to T Squared/SP AusNet for the Identification of Necessary Network Augmentation Investments & Solutions Development.

The list of services described is not intended to be exhaustive and is provided to demonstrate some of the key services available from RIPEN Utility Services. For any services not listed herein, please enquire using the contact details below.